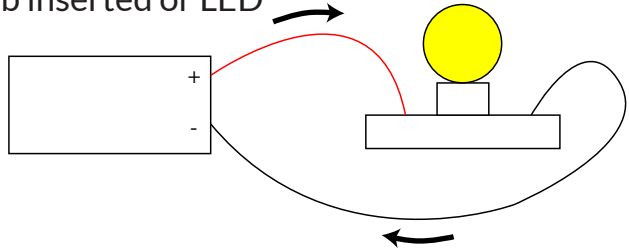


SIMPLE CIRCUIT

Requires:

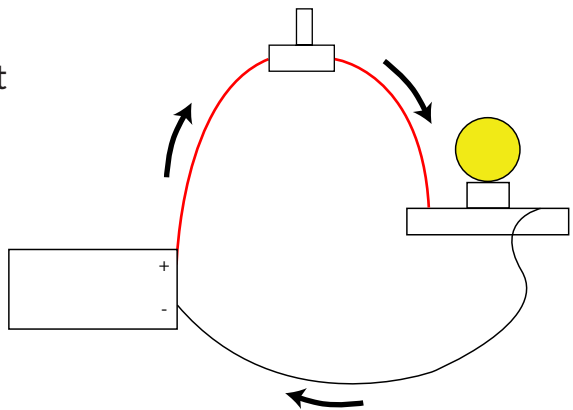
- 1 Battery holder with batteries inserted (correct orientation)
- 1 Bulb holder with bulb inserted or LED



Electricity flows from the positive through the bulb and back to the negative of the battery and illuminates the bulb. When using LED, ensure that red positive lead to long LED leg and the black negative to short LED leg.

SWITCHES

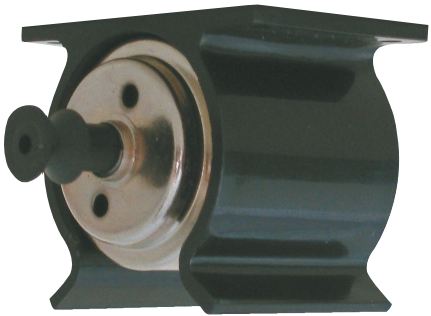
Add a switch to your circuit so you can control the flow of electricity and turn the bulb on and off.



Try replacing the switch with the other type to see the mechanical differences but observe the same effect on the bulb. Replace the bulb holder with the buzzer to show electricity can create sound as well as illuminating the bulb.

MOTORS

Electricity can be used to drive an electrical motor. Insert the motor into the motor holder and replace your buzzer or bulb in the circuit.



Try adding some paper or card propellers to the motor or a piece of string tied around the pulley for a better visual of the motor running.

2B251

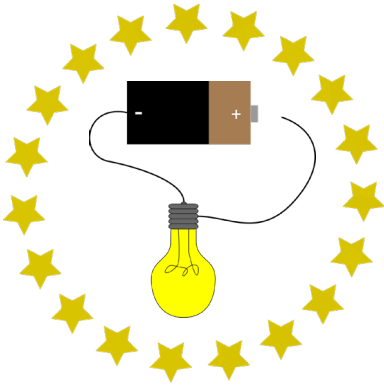
Electricity Circuit Kit



WARNING:  **CHOKING HAZARD**—Small Parts
Not for children under 3 years.

Kit Contents:

Batteries and Holder
Bulb and holder
LED
Motor, Pulley and holder
Switches
Buzzer
Wires and clips
Ideas sheet
Storage Box



ABACUS EDUCATIONAL SUPPLIERS

www.abacused.com.au